

Pension Hayaokidori

<http://www.hakubajapan.com/> E-mail : info@hakubajapan.com

A cozy homy accommodation in Hakuba Nagano Japan - 1998 Nagano winter olympic venue.



Phone: 0261-75-2142 Oversea calls: +81-261-75-2142
Fax: 0261-75-2165 Oversea fax: +81-261-75-2165
Postage address: Hakubanomori Kamishiro Hakuba Kita-azumigun Nagano 399-9211 JAPAN

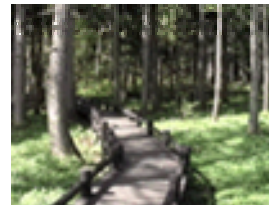
Scenery



Obinata outdoor hot spring (onsen)



Symbolic Hakuba 3 mountains



Walking trail in fresh green



Outdoor activity rafting



Lake Aoki



Cultural asset

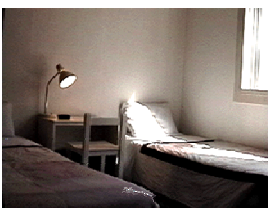


Summer flowers



Autumn foliage

Interior



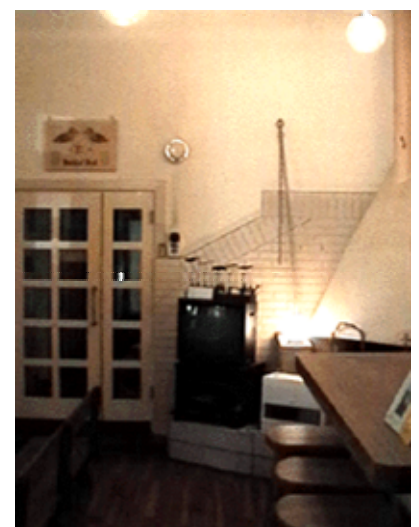
Bedroom



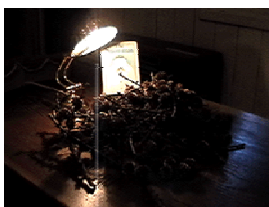
Bedroom



Counter bar



Living room

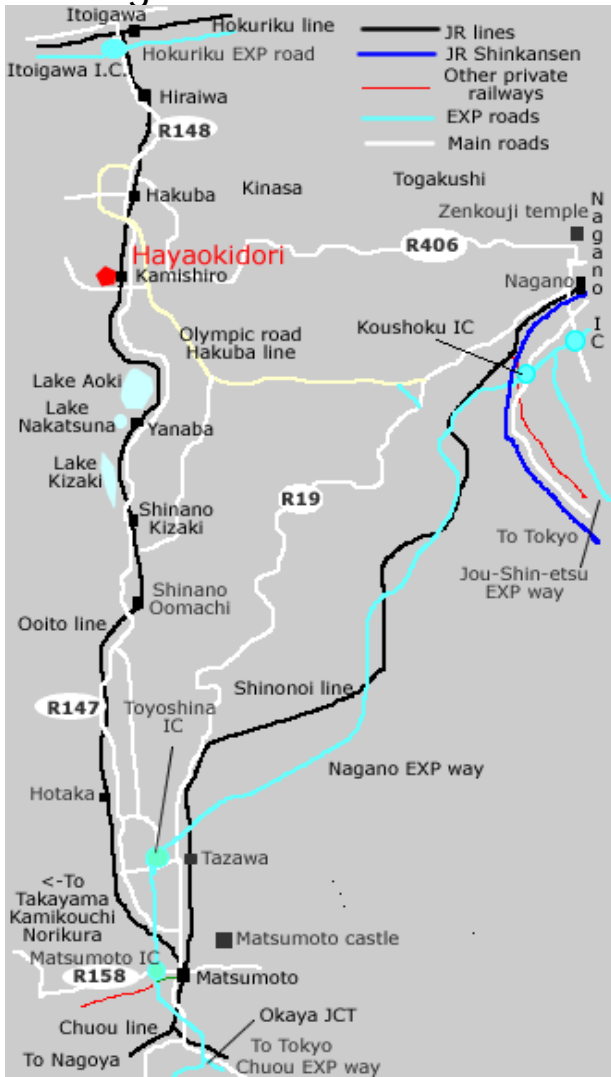


Reading table



Dining room

Getting around



Detail maps are available in our web site.

<http://www.hakubajapan.com/english/navigator/traffic-e.html>
<http://www.hakubajapan.com/english/navigator/roundmap-e.html>

By public transportations

Narita airport



From Tokyo

(Narita express train)

Tokyo station

Shinkansen(bullet train) Asama



Nagano station

Bus service for Hakuba direction



Goryu bus stop

Express bus

Shinjuku



Hakuba Goryu

bus stop

Shinjuku station

Limited express train "Super-Azusa" or "Azusa"



Matsumoto station

Ooito line local train



Kamishiro station

Kansai airport



Limited express train "Haruka" for Shin-Osaka



From Shin-Osaka, Kyoto, Shin-Kobe

Shinkansen "Nozomi", "Hikari", or "Kodama"



Nagoya station



Nagoya airport



Limited express train "Shinano"



Matsumoto station

Ooito line local train



Kamishiro station

Domestic flights available

Fukuoka

Itami(Osaka)

Sapporo



Matsumoto air port

Airport bus

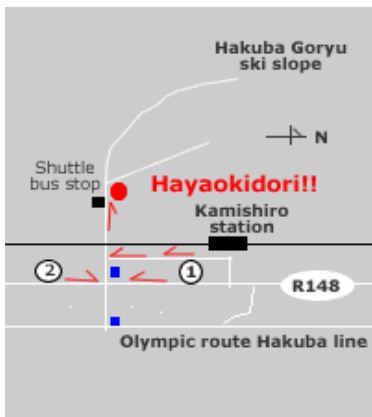


Matsumoto station

Ooito line local train



Kamishiro station



#1: **Goryu bus stop** for/ from Nagano

#2: **Hakuba Goryu bus stop** for/ from Shinjuku

5-7 mins on foot from Kamishiro station,
Goryu bus stop and Hakuba Goryu bus stop.

Approximate time to other places.

	By car	By public transportation			
Nagano	1hour	1hour	Oomachi	25mins	30mins
Matsumoto	1.25h	1.5h	Takayama	3h	4h~
Kamikouchi	2h	2.5-3h	Tsumago ,Magome	3h	3.5h~
Kurobe dam	1h	1.5h	Kanazawa	2.5h	3h~
Utsukushigahara	2.5h	3h~	Karuizawa	2h	1.75h

The time for Kami-kouchi is to sawando parking area, one for Kurobe dam is to Ohgisawa parking area.

Available activities/ attractions	Available activities/ attractions				
	spring	summer	autumn	winter	
ski & snowboarding	○			○	Nov.--May
cross country skiing				○	Jan.--March
paragliding	○	○	○		Apr.--Oct.
rafting	○	○	○		Apr.--Oct.
kayaking, canoe	○	○	○		Apr.--Oct.
mountainbiking	○	○	○		Apr.--Nov.
mountaineering	○	○	○		May--Oct.
tennis	○	○	○		Apr.--Nov.
hot springs	○	○	○	○	Annually
fishing	○	○	○		Apr.--Nov.
golf (9holes)	○	○	○		Apr.--Nov.

Accommodation & Rates		
Room rates	Twin	10,920jp yen/night
	Quadruplet	16,380jp yen/night
Extra charge around new year's day, 3-5th May, 10-15th August. Depends on the calendar.		
1,050jp yen/person for breakfast		
2,625jp yen/person for course dinner		
*9 guest rooms		
*9 car parking space for free		
*Towels, tooth brush, tooth brush paste.		
*Internet connection.		
*Credit card acceptable - Visa & Master.		

*Rates from 1st Nov. 2004 through 31st March 2005